

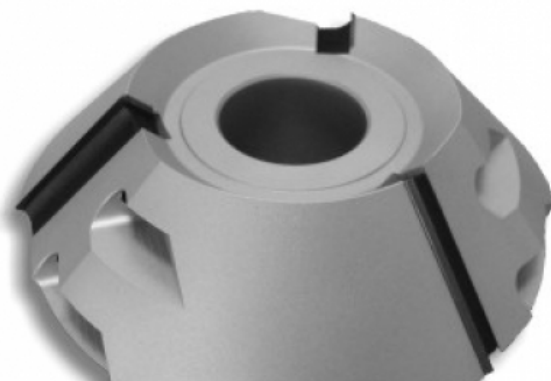
## FRESA A SMUSSARE

### DESCRIZIONE

Fresa a smussare da D.140 a D.180 per smussi a 22,5°-30°-45°

### INFORMAZIONI TECNICHE

UTENSILI CON COLTELLI  
STANDARD PER SMUSSARE



COD. ARTICOLO	D	H	d	ROT	Z	ANGLE	S
MEC1.F.01	160	50	35-40	RH	3	45°	35,36
MEC1.F.02	160	50	35-40	LH	3	45°	35,36
MEC1.F.03	180	50	35-40	RH	3	45°	42,43
MEC1.F.04	180	60	35-40	LH	3	45°	42,43
MEC1.F.05	140	50	35-40	RH	3	30°	43,30
MEC1.F.06	140	50	35-40	LH	3	30°	43,30
MEC1.F.07	140	50	35-40	RH	3	22,50°	46,19
MEC1.F.08	140	50	35-40	LH	3	22,50°	46,19